

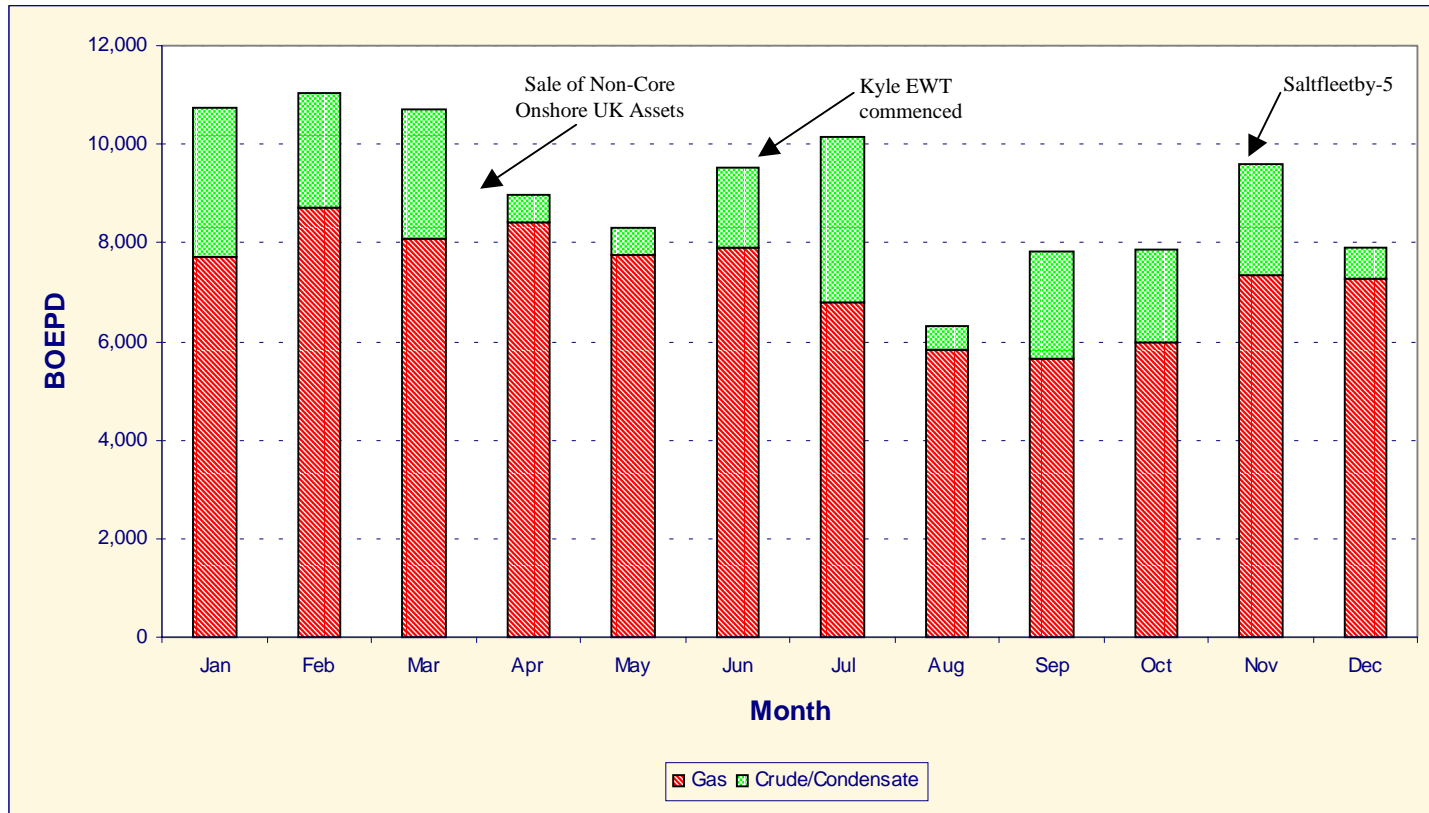


ROC OIL COMPANY LIMITED

2000 RESULTS

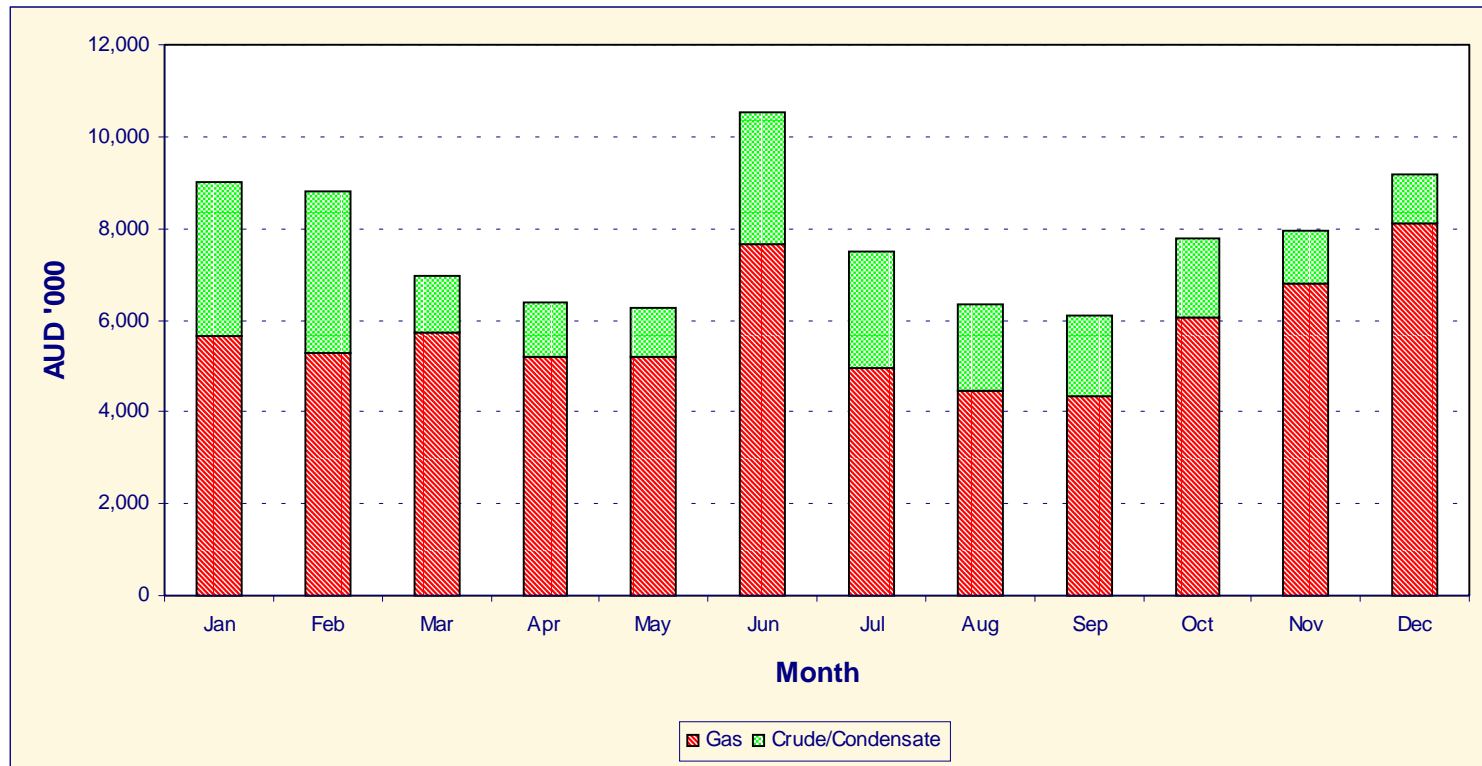
- **FIRST FULL YEAR OF OPERATION SINCE LISTING**
- **REVENUE AND PROFIT DRIVEN BY:**
 - **STRONG SALTFLEETBY PERFORMANCE**
 - **STRONG UK GAS PRICES**
 - **KYLE EXTENDED WELL TEST**
 - **SALE OF NON-CORE ONSHORE UK ASSETS**
- **\$15.1 MILLION PROFIT AFTER TAX**
- **\$17.5 MILLION PROFIT AFTER TAX, BEFORE EXPLORATION EXPENSE, EXPLORATION WRITE-OFFS AND ABNORMALS EXCEEDS PROSPECTUS FORECAST OF \$13.1 MILLION BY 33%**

ROC OIL COMPANY LIMITED 2000 PRODUCTION



ROC OIL COMPANY LIMITED

2000 SALES REVENUE



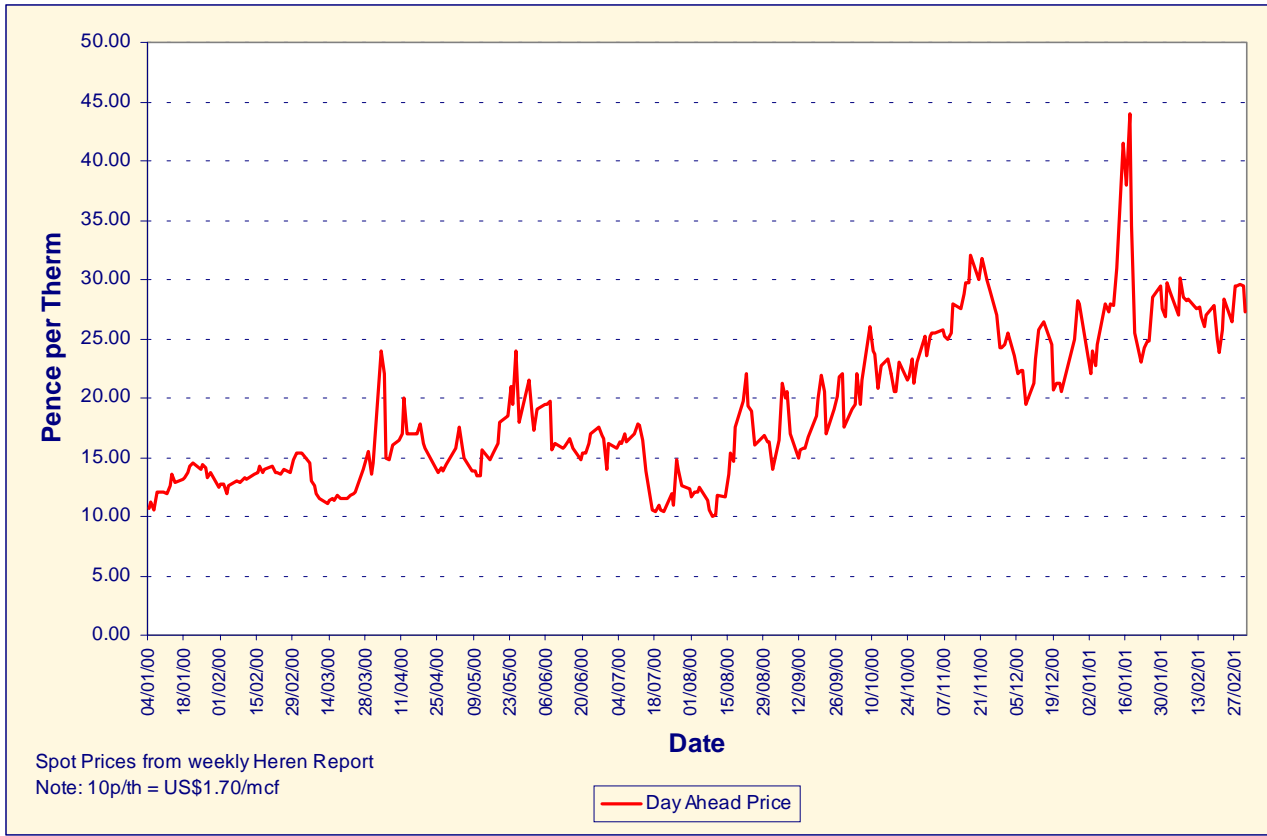
ROC OIL COMPANY LIMITED

2000 Spot Brent Oil Price



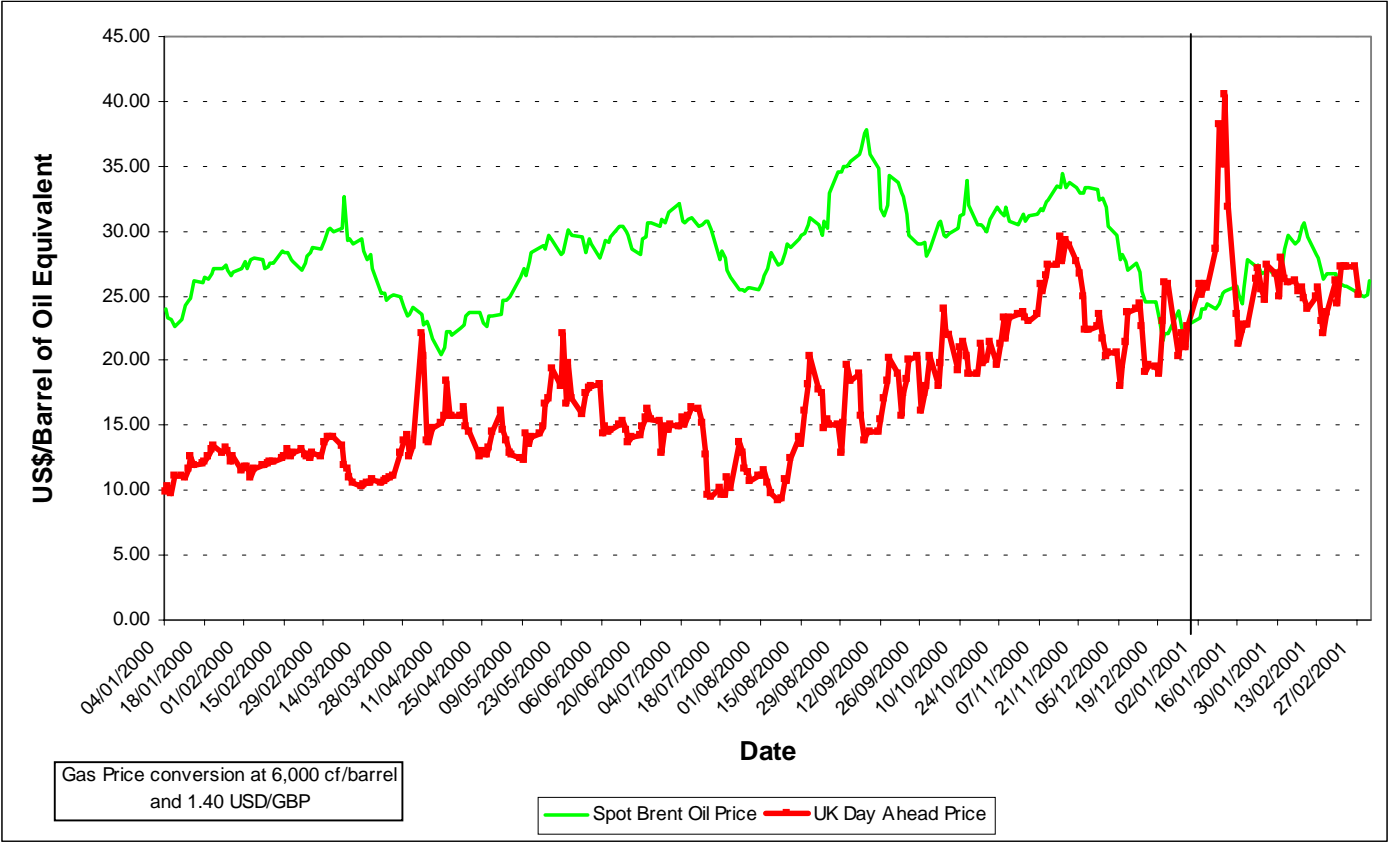
ROC OIL COMPANY LIMITED

UK 2000 SPOT GAS PRICES



ROC OIL COMPANY LIMITED

2000 Spot Brent Oil and UK Spot Gas Price



ROC OIL COMPANY LIMITED
2000 OPERATING PROFIT AFTER TAX

\$ MILLION

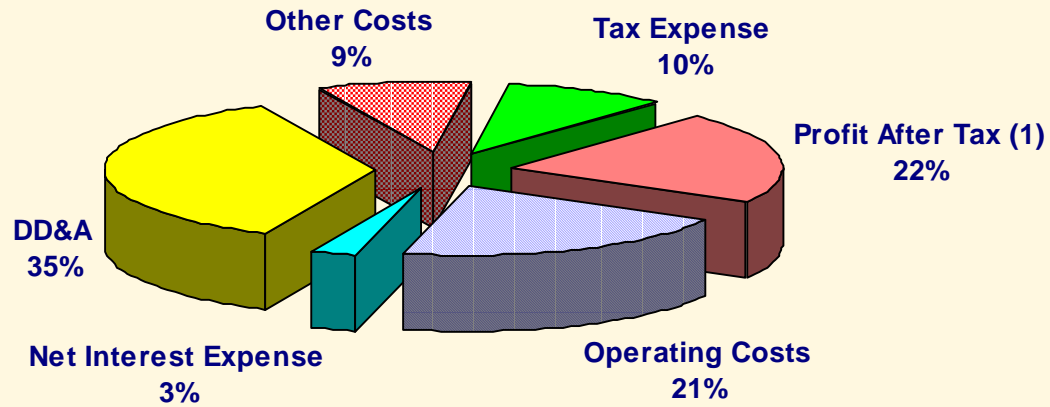
	2000	1999
SALES REVENUE	<u>90.9</u>	<u>16.6</u>
OPERATING PROFIT/(LOSS) BEFORE TAX	24.6	(3.7)
ABNORMAL ITEMS BEFORE TAX	(1.9)	(1.7)
TAX EXPENSE	<u>(7.6)</u>	<u>(0.5)</u>
OPERATING PROFIT/(LOSS) AFTER TAX	15.1	(6.0)

ROC OIL COMPANY LIMITED

2000 ABNORMAL ITEMS

	After Tax Profit/(Loss) <u>\$Million</u>
Net Foreign Exchange Losses	(0.9)
Exploration Expense	(7.7)
Exploration & Materials Write-Off	(14.5)
Sale of Non-Core Onshore UK Assets	<u>22.0</u>
	<u>(1.1)</u>
Note: Exploration Expenses & Write Offs "Above the Line"	(1.3)

ROC OIL COMPANY LIMITED 2000 PROFIT BREAKDOWN



(1) Profit After Tax, Before Exploration Expense, Exploration Write-Offs and Abnormals

ROC OIL COMPANY LIMITED

2000 FINANCIAL RESULTS

	\$ PER SHARE	
	2000	1999
CASHFLOW FROM OPERATIONS	\$0.528	(\$0.013)
EBITDA	\$0.552	-
PROFIT AFTER TAX	\$0.142	(\$0.100)

Note: Based on 105,994,060 ordinary fully paid shares on issue

ROC OIL COMPANY LIMITED

2000 EXPLORATION & DEVELOPMENT EXPENDITURE

- **\$23.5 MILLION EXPLORATION EXPENDITURE**
 - EQUATORIAL GUINEA **\$8.9 MILLION**
 - MONGOLIA **\$10.5 MILLION**
 - UK **\$2.1 MILLION**
 - PERTH BASIN **\$1.1 MILLION**
- **\$26.3 MILLION DEVELOPMENT EXPENDITURE**
 - UK ONSHORE **\$13.1 MILLION**
 - UK OFFSHORE **\$13.2 MILLION**

ROC OIL COMPANY LIMITED CAPITAL STRUCTURE

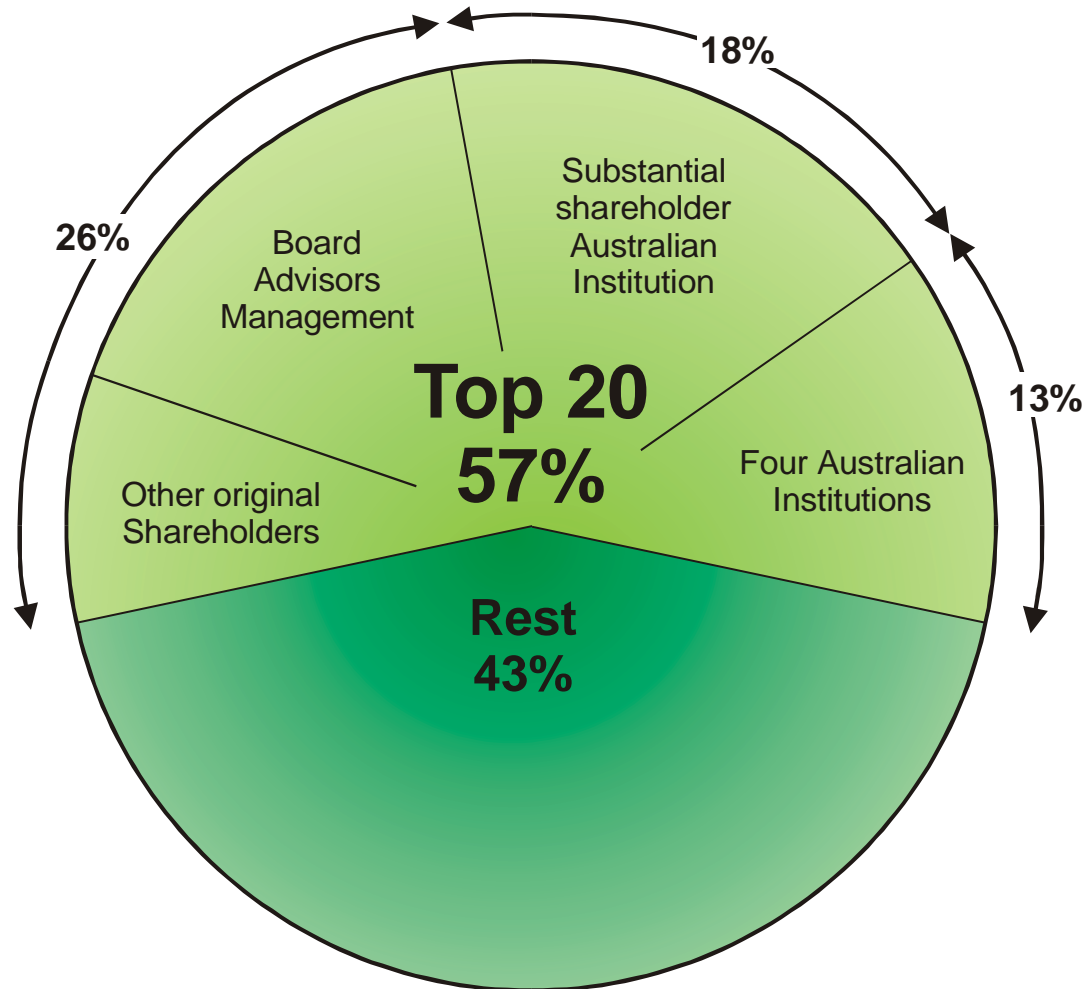
FULLY PAID ORDINARY SHARES	105,994,060
SHAREHOLDER OPTIONS	7,698,830
EMPLOYEE OPTIONS	4,073,910

ROC OIL COMPANY LIMITED
SUMMARY BALANCE SHEET AT
31 DECEMBER

\$ MILLION

	2000	1999
<i>CURRENT ASSETS</i>		
CASH & SHORT TERM DEPOSITS	55.9	25.9
OTHER	26.8	10.2
	82.7	36.1
<i>NON-CURRENT ASSETS</i>		
EXPLORATION	34.3	35.0
PRODUCTION & DEVELOPMENT	175.5	190.9
OTHER	5.0	18.8
	214.8	244.7
<i>CURRENT LIABILITIES</i>		
ACCOUNTS PAYABLE	29.1	14.7
OTHER	2.9	9.1
	32.0	23.8
<i>NON-CURRENT LIABILITIES</i>		
BORROWINGS	55.1	61.7
OTHER	13.0	24.1
	68.1	85.8
<i>EQUITY</i>	197.4	171.2

ROC'S SHAREHOLDERS



Note: percentages have been rounded.

SENSIBLY CONTRARY STRATEGY: CONSISTENTLY IMPLEMENTED

YEAR	PRIMARY GOAL	RESULT
• 1997	- IPO within 3 years	- Done, within 32 months
• 1998	- Establish operating capabilities	- Done, via Mongolia operations
• 1999	- Acquire secure production base	- Done, via UK acquisition
• 2000	- Meet or beat, \$13.1 million Prospectus profit forecast	- Done, forecast beaten by 33%
• 2001	- Find 'the next big thing'	- Current focus

ROC IN 2000

WHAT DID ROC DO IN 2000?

- **Generated \$153 million in sales revenue and proceeds of sale of non-core reserves; maintained 2P reserves unchanged at 33.6 MMBOE and reduced net debt to zero.**

WHAT HAPPENED TO ROC IN 2000?

- **Shareprice and market capitalisation declined 17% to \$1.20 and \$127 million respectively.**

THIS MEANS THAT 'DURING 2000' ROC GENERATED \$26 MILLION MORE THAN THE YEAR-END VALUE THE MARKET ATTRIBUTED TO THE ENTIRE COMPANY AND ALL OF ITS ASSETS

ROC'S PORTFOLIO FOCUS

NICHE	UK	ONSHORE	OPERATED	100%	SOLID PRODUCTION, PLENTY OF EXPLORATION UPSIDE
		NORTH SEA	NON-OP	VARIOUS	EMERGING PRODUCTION, HIDDEN VALUE
	AUSTRALIA	PERTH BASIN	OPERATOR	45%	2Q01 EXPLORATION DRILLING, SUBJECT TO RIG
INTERNATIONAL	WEST AFRICA	SENEGAL	OPERATOR	46-25%	WITH WOODSIDE, EXPLORATION
		MAURITANIA	OPTION	2.0-2.7%	WOODSIDE TO DRILL 2 WELLS 2Q01
		EQUATORIAL GUINEA	TECHNICAL PARTNER	60%	BIG POTENTIAL IN DEEP WATER
	ASIA	MONGOLIA	OPERATOR	100%	MINOR PRODUCTION, FARMOUT/DROP
	MIDDLE EAST	VARIOUS	N/A	N/A	VARIOUS NEW VENTURE PROJECTS, NONE CERTAIN

SALTFLEETBY IN A NORTH SEA CONTEXT

- **BY LATE 2000 SALTFLEETBY WAS RANKED IN THE UK'S TOP 50 PRODUCING GASFIELDS**
- **THE OTHER 49 WERE ALL IN THE NORTH SEA – WHERE THERE WERE ALSO ANOTHER 50 FIELDS NOT AS PRODUCTIVE AS SALTFLEETBY**

WHY DOES DEEP WATER WEST AFRICA HAVE SUCH A HIGH PROFILE?

Area	Date of First Discovery	No of Discoveries		Deep Water Reserves	
		Total	> 1000m	Total (BBLs$\times 10^9$)	% of Regional Reserves
Gulf of Mexico USA	1983	83	33	4.7	82
Brazil	1985	24	5	4.2	88
West Africa (Nigeria to Angola)	1995	12	7	5.0	46

Note - Deep water: > 500m

- Elsewhere in the world there are only 10 deepwater fields (none >1000m water depth) spread through Mediterranean, SE Asia and NW Europe

ROC OIL COMPANY LIMITED

- **PROFITABLE, AUSTRALIAN, PUBLICLY LISTED OIL COMPANY WITH NO NET DEBT, A SENSIBLY CONTRARY STRATEGY, AN INTERNATIONAL FOCUS AND A STRONG OPERATING CAPABILITY**
- **MARKET CAPITALISATION : A\$135 MILLION**
- **7000 BOEPD : ALMOST 100% GAS AND ALL ROC-OPERATED. ALMOST ENTIRELY FROM ONSHORE UK. DUE TO RISE BY ONE THIRD TOWARDS 10,000 BOEPD IN APRIL2001 WHEN FIRST NORTH SEA FIELD COMES ON STREAM**
- **CASH POSITION : A\$56 MILLION**
- **2000 NET PROFIT: A\$15 MILLION, ONE THIRD BETTER THAN PROSPECTUS FORECAST**
- **2000 GROSS SALES REVENUE: A\$91 MILLION**
- **2000 CASH FLOW FROM OPERATIONS : A\$56 MILLION**
- **ACTIVE OPERATIONS : ONSHORE UK (100% OWNERSHIP OF BIGGEST ONSHORE GAS FIELD, 73 BCF), PRODUCTION AND EXPLORATION IN THE GOBI DESERT, MONGOLIA; EXPLORATION IN DEEP WATER OFFSHORE EQUATORIAL GUINEA AND SHALLOW WATER OFFSHORE SENEGAL**
- **100 EMPLOYEES IN AUSTRALIA, UK , MONGOLIA AND SENEGAL**

MARKET VALUE vs TWO MAIN ASSETS

← \$100 MM →

Market Value
\$127 MM

Conservative*
after tax valuation
of Saltfleetby and Kyle
\$142 mm

LITTLE / NO NET DEBT

*100% of proved reserves; 50% of probable reserves, 11% p.a. nominal discount rate, conservative price forecast

MARKET VALUE vs CASH GENERATED

← \$100 MM →

End 2000
market capitalisation
\$127 MM

Production sales
revenue
\$91 MM

Proceeds from
sale of non-
core reserves
\$62 MM

UNCHANGED 2P RESERVE BASE
33.6 MMBO

THE USUAL EXCUSES FOR UNDER PERFORMANCE

- **Too small** : **Look at Hardman, Tap**
- **Too much overseas focus** : **Look at Hardman, Amity**
- **Onshore UK oilfields disappointed** : **Look at the \$61 million sale and \$22 million profit – after receiving \$16 million revenue**
- **Not enough drilling** : **Look at ROC's 2001 drilling schedule**
- **Problems with Kyle** : **Look at ROC in six weeks time**
- **Lacklustre Sector** : **Look at Woodside, Santos & others**
- **Took too much money from IPO** : **Either talk to Santos, Woodside or ExxonMobil - or come and join the rest of the world living in 2001**
- **Not enough roadshows/PR** : **Fair comment**

A CHANGED MARKET

	Command⁽¹⁾ (30 June 1996)	ROC (31 Dec 2000)	Score
Sales Revenue (\$MM)	9.3	91.0	R
Operating Profit/(Loss) after Tax before abnormals (\$MM)	(0.8)	(17.5)	R
Cash (\$MM)	7.3	56.0	R
Cash Flow from Operations (\$MM)	10.4	56.0	R
Debt (US\$MM)	25 Bridging + 40 Project	30.5	R
Total Assets (\$MM)	113.8	297.4	R
Total Liabilities (\$MM)	23.1	100.0	C
Shareholders' Equity	108.0	197.4	R
Production (BOEPD)	3434	9227	R
2P Reserves (MMBOE)	57.0 (inc. Russia)	33.6	C
Share Price Performance during previous 12 months	Up 103%	Down 17%	C
Market Capitalisation (\$MM)	208	127.0	R

⁽¹⁾ Pre-merger with Cairn Energy

WHAT THE MARKET SEEMS TO WANT – WHAT ROC IS PERCEIVED NOT TO HAVE

- **Exploration sizzle**
- **The smell of a take-over**
- **PR**
- **A reserve base that is broad and deep**

ROC'S UNCHANGING GOALS

ROC's sensibly contrary strategy
is to make money for shareholders
by establishing a substantial production base
and significant production revenue
through the cost efficient acquisition
of areas containing, or adjacent to, proven hydrocarbons
with considerable exploration upside
in world class petroliferous basins
in countries with supportive governments
and attractive fiscal regimes.